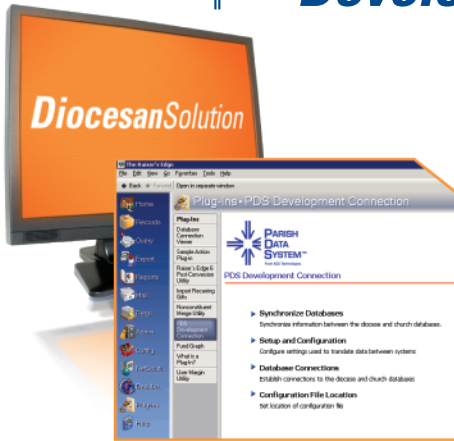


PDS DevelopmentConnection™



Create synergy between the diocese and parishes.

PDS Development Connection allows your diocese to discover new families sooner and take advantage of the constant stream of changes originating in the churches. This product is a plug-in component to Blackbaud's The Raiser's Edge™ and works along with PDS DioOffice Server to provide the capability of automating additions, changes and deletions of name and address information from parishes using PDS Church Office™ into The Raiser's Edge, and for Dioceses to send changes for review to parishes. This tool gives you the potential to increase mailing effectiveness and reduce the number of pieces of returned mail saving you time, money, and resources.

DISTINCTIONS

- Secure
- Easy to Use
- Efficient
- Reliable

USES

- Typically, a parish will use PDS Church Office to submit additions, changes and deletions to family name, address, e-mail, and phone number records on a regular basis. The parish then submits the data to the diocese by way of the PDS DioOffice server.
- The Development Connection links to PDS DioOffice Server to upload all family additions, changes, and deletions made by the parishes.
- Diocesan users can detect potential matches, and accept, ignore, or decline the data submitted by the parish. Once an action is selected, PDS Development Connection updates the constituent record with the appropriate information.
- Diocesan users can make changes to names and addresses for data consistency or to update information. The altered address and e-mail information is synchronized back to DioOffice Server for review to be accepted or declined by the parish. Name changes are not synchronized back to parishes.

FEATURES

Customize to fit your unique needs

- Style transformation tables and address definition options provide translation formats from PDS Church Office for names and addresses.
- You may define prefix and suffix styles for transformation for more control over Raiser's Edge database format. For example, change every instance of Mister in the name to the prefix Mr.
- Select address types, mailing names, and formal and informal salutations to properly translate addresses between PDS Church Office and The Raiser's Edge.
- Select phone types and choose to upload phone numbers.

Synchronize with Parishes

- Head of family and spouse name, address, e-mail, and phone number information is synchronized with The Raiser's Edge.
- When a new church is synchronized to an existing constituent, new addresses are created for that church only. Existing addresses are not modified in any way.
- Duplicates are matched based on the criteria setup in The Raiser's Edge. The Development Connection presents possible matches and duplicates for review prior to updating data.

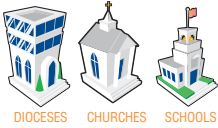
"The Development Connection is a dream come true. It provides a seamless synchronization process between parishes that use PDS Church Office and The Raiser's Edge diocesan database."

Marta
Catholic Diocese of Orlando, FL



PDS DevelopmentConnection™

TOTAL INTEGRATED SOLUTIONS



DIOCESES CHURCHES SCHOOLS

	•	Church Office™
	•	Formation Office™
		• School Office™
		• HeadMaster® Software
•		DioOffice™
•		Development Connection™
	•	DioView™
	•	• Ledger™
	•	• Ledger/Payroll™
•	•	• Facility Scheduler™
	•	• Ministry Scheduler™
	•	PDS Connects™
•	•	• PDS OnDemand™
		• Chalksite™
•	•	• Extend Platform™
	•	• LiveStor™
•	•	• Group Reach™
•	•	• Forms & Supplies
•	•	• Implementation
•	•	• Consulting and Training
•	•	• Data Services
•	•	• Preferred Client Program
•	•	• Networked Multi-User Support

Upload Phone Numbers

- PDS Church Office allows for unlimited phone numbers and phone types. The Development Connection includes an option to upload these phone numbers into the constituent record.
- Phone numbers will be added in the priority order as listed in PDS Church Office to the extent allowed by The Raiser's Edge.

Merge Constituent Records

- Use this function after you have merged constituent records in The Raiser's Edge. This allows the merged record to maintain its synchronization with Church Office and other programs using the DioOffice server.

Manage Changes

- Changes to data are presented in review windows prior to any upload or download of information. You always have a choice to accept, ignore, or reject the changed data.
- There is a feature to let you enter follow-up remarks with the constituent record in Development Connection. The follow-up remarks are kept within the constituent record as a reminder for any action that you would like to perform on the data. Data in the process of synchronization cannot be acted upon until it is resident in the database.
- Families who are no longer connected to a church can be managed as inactive.

Part of PDS Development and Communications Solution

- The Development Connection is part of the PDS Development and Communications Solution. This enables dioceses to synchronize family information with parishes and schools so you can focus on fundraising, stewardship, and communication efforts.

Comprehensive Support and Training Options

- Preferred Client Program offers free software upgrades, unlimited access to well-trained, knowledgeable support representatives during business hours, and 24/7 access to the online Knowledge Base — plus much more.
- Training options for PDS products (available for additional fee) include classroom training, one-on-one Webcasts, and online self-paced training videos.

SYSTEM REQUIREMENTS

- Raiser's Edge v7.80.1122.37 (or higher)
- OS meeting Raiser's Edge requirements with current service packs applied
- Windows Installer v3.1
- Microsoft .Net Runtime v2.0
- High speed Internet access
- DioOffice Server (internet capability)
- Organizations submitting information to the DioOffice Server need to have a minimum of PDS Church Office v4.0 or PDS School Office v4.0

800.892.5202

parishdata.com/developmentconnection



Since 1978, Parish Data System® has been the leading developer of Catholic management software solutions by meeting the needs of over 8,000 parishes, schools and dioceses worldwide. In 2004, PDS joined forces with another church management software leader, ACS Technologies®, combining strengths and staff to offer the industry's best support and training along with the broadest line of church management software solutions. PDS software is used by the majority of parishes in dioceses throughout the United States making it the top choice for Catholic management software and services. PDS continues to develop new technology solutions that aim to enable accurate data management, increase communications, and empower growth within Catholic organizations.